



Philadelphia Hardware Group, Inc.

6590 Top Gun Street
San Diego, CA 92121
www.philihardware.com
Tel
858.642.0450
858.545.2309
Fax
858.642.0454

Residential Hinge

Ball Bearing

1/4" radius corner or 5/8" radius corner

SPECIFICATIONS

- 3-1/2" and 4" Full mortise hinge.
- 5 knuckles, 2 bearing balls, reversible design.
- Steel base metal, gauge: 0.087" (2.2mm).
- Non-Removable pin (NRP) available

CODE	SIZE	RADIUS	SCREW
RH62	3-1/2" x 3-1/2"	1/4"	#9 x 3/4"
RH65	3-1/2" x 3-1/2"	5/8"	#9 x 3/4"
RH72	4" x 4"	1/4"	#9 x 1"
RH75	4" x 4"	5/8"	#9 x 1"



RH7210
4" x 4" x 1/4"R US10B

FINISH

- Stock Finish – US3, US4, US5, US10B, US15, US15A, US26, US26D
- Special order – US15S (Satin Nickel non-brush), US26S (Satin Chrome non-brush)

PACKING

- Bulk assembled
- Box back – 2pcs/box with screws. (Prefix **RHB** instead of RH)

SCREWS

#9 x 3/4" and #9 x 1" wood screw available



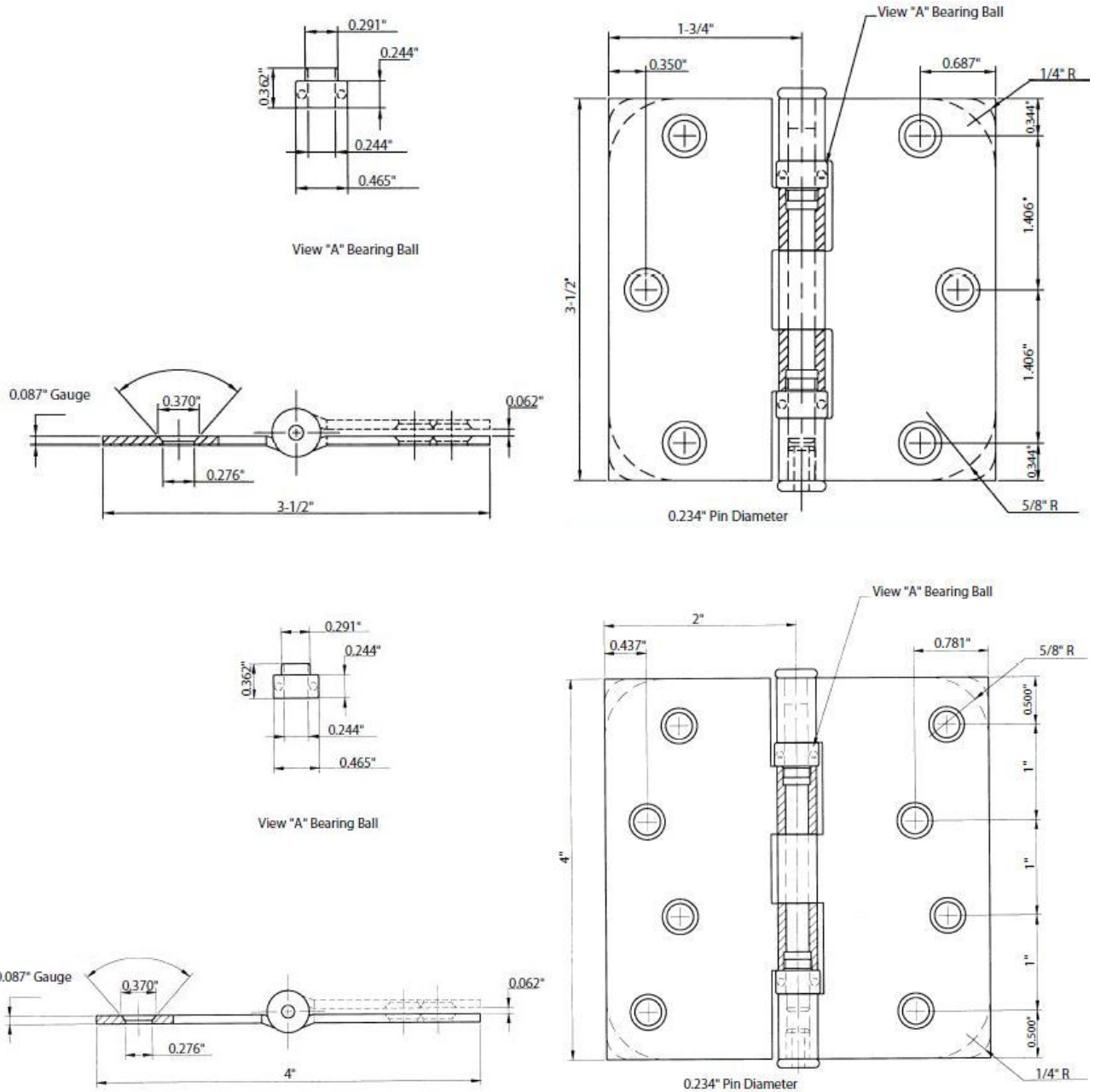
6590 Top Gun Street
San Diego, CA 92121
www.philihardware.com

Philadelphia Hardware Group, Inc.

Tel
858.642.0450
858.545.2309
Fax
858.642.0454

DIMENSIONS

Not to Scale



SAN DIEGO

CHICAGO

SEATTLE