

TEMPLATE OF 7000 / F7000 RIM DEVICE (1:1)

FOLD THIS LINE AND
PLACE THIS EDGE
AGAINST FACE OF
STOP

57.15mm (2 1/4")

TAPPED 12# HOLES*3

76mm(3")

STRIKE

for Security Plate
mounting

These special two labeled holes are designed for installation of specified outside trim, please DO NOT drill the holes on door if the out trim is not needed.

89mm (3 1/2")

108mm(4 1/4")

70mm(2 3/4")

22mm(7/8")

22mm(7/8")

17.1mm(7/16")*2

- FOR SEX BOLT DRILL
9.6mm (3/8") HOLE OUTSIDE
- FOR LEVER TRIM VERTICAL
THRU-BOLT MOUNTING
- IF EXTERIOR ACCESS BY
LEVER/KNOB TRIM DRILL
- 54mm (2 1/8") DIAMETER HOLE
- IF EXTERIOR ACCESS BY
RIM CYLINDER DRILL
- 31.8mm (1 1/4") DIAMETER HOLE

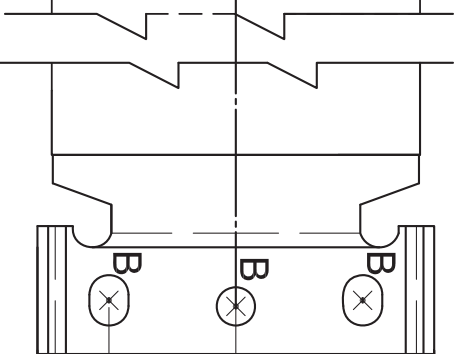
This mounting hole is
NO NEEDED if there
is NO OUTSIDE TRIM
application

1041mm (41") FROM

FINISHED FLOOR
CENTER LINE
OF PUSH RAIL

Q of Device

FOR SHUN FO
ENIT RETENED
ROOLF DEHSINIA
WROF (".17") WU1701



17.9mm (5/8")

LHR

RHR