



Philadelphia Hardware Group, Inc.

6590 Top Gun St.
San Diego, CA 92121
www.philhardware.com
Tel: 858-642-0450
Fax: 858-642-0454
V091423

Advantage Door Closer 4400 Series

**COMMERCIAL
GRADE 1**

ANSI GRADE 1

ANSI/BHMA A156.4

Series 2000, PT1

Exceeds 1,500,000 cycles with Backcheck



LISTED

UL10C Positive Pressure Rated. Conforms to UBC 7-2 (1997). (Uniform Building Code Standard)



Comply with ANSI A117.1



Features

- Multi Size Spring
- Adjustable Power Size #1~6
- Factory Preset Size #3
- Standard With Adjustable Back Check
- Tri-Packed For All Types of Installation

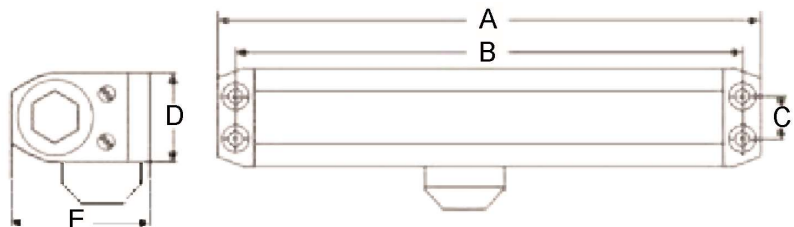


Specifications

Material	Aluminum Alloy Body, Forged Steel Arm, Heat Treated Forged Steel Piston, Double Heat Treated Steel Pinion
Cover	Standard With Full Plastic Cover, Optional With Metal Cover
Valves	Staked Valve For Adjustments Triple Valve Control – Closing Speed, Latching Speed & Back Check
Arms & Brackets	Standard With Regular Arm and Parallel Bracket
Screws	Standard With Self Tapping Wood Screws, Machines Screws & Sex Bolts
Model	4400 – Adjustable Power #1~6 With Back Check
Finish	ALUM (689), DURO (695), GOLD (696), BLACK (693)

Technical Dimensions

- A.) Length of Closer Body – 9-3/4"
- B.) Horizontal Mounting Holes – 9-1/16"
- C.) Vertical Mounting Holes – 3/4"
- D.) Height of Closer Body – 1-3/4"
- E.) Projection From Door – 2-7/8"



SAN DIEGO

CHICAGO

ATLANTA

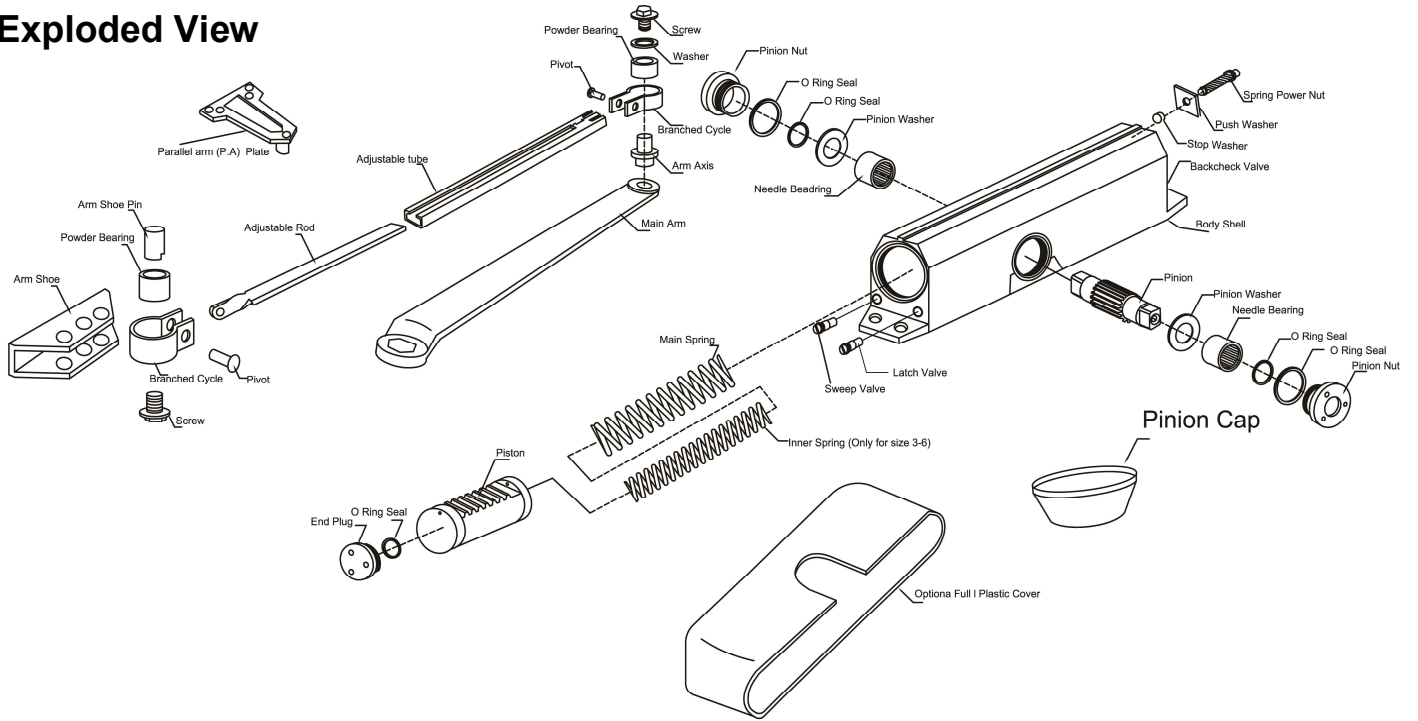
DALLAS






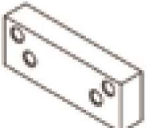




Philadelphia Hardware Group, Inc.

6590 Top Gun St.
 San Diego, CA 92121
 www.philhardware.com
 Tel: 858-642-0450
 Fax: 858-642-0454
 V091423

Exploded View



Accessories

<p>4001HO Hold Open Arm</p> 	<p>HFW01 Flat Wrench For Hold Open Arm</p> 	<p>PAB01 Parallel Bracket</p> 	<p>BSS02 Blade Stop Spacer</p> 	<p>1344 Sex Bolts</p> 
<p>40C Full Cover</p> 	<p>40DPPA Drop Plate - Parallel</p> 	<p>40DPTJ Drop Plate - Top Jamb</p> 		

SAN DIEGO

CHICAGO

ATLANTA

DALLAS