




**Philadelphia Hardware Group, Inc.**

6590 Top Gun St.  
San Diego, CA 92121  
www.philhardware.com  
Tel: 858-642-0450  
Fax: 858-642-0454  
V091423

# Advantage Door Closer 4000 Series

**COMMERCIAL  
GRADE 2**

**GRADE 2**  
Factory tested to meet  
ANSI Grade 2 durability

 **UL** LISTED  
UL10C Positive Pressure  
Rated. Conforms to UBC  
7-2 (1997). (Uniform  
Building Code Standard)



## Features

- Power Size #4
- Tri-Packed For All Types of Installation

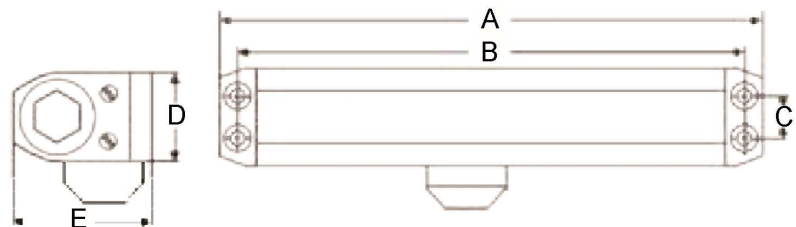


## Specifications

Material	Aluminum Alloy Body, Forged Steel Arm, Heat Treated Forged Steel Piston, Double Heat Treated Steel Pinion
Cover	Optional Full Plastic Cover
Valves	Staked Valve For Adjustments Dual Valve Control – Closing Speed & Latching Speed
Arms & Brackets	Standard With Regular Arm and Parallel Bracket
Screws	Standard With Self Tapping Wood Screws & Machines Screws
Model	4000 – Power Size #4
Finish	ALUM (689), DURO (695), GOLD (696), BLACK (693)

## Technical Dimensions

- A.) Length of Closer Body – 9-3/4"
- B.) Horizontal Mounting Holes – 9-1/16"
- C.) Vertical Mounting Holes – 3/4"
- D.) Height of Closer Body – 1-3/4"
- E.) Projection From Door – 2-7/8"



**SAN DIEGO**

**CHICAGO**

**ATLANTA**

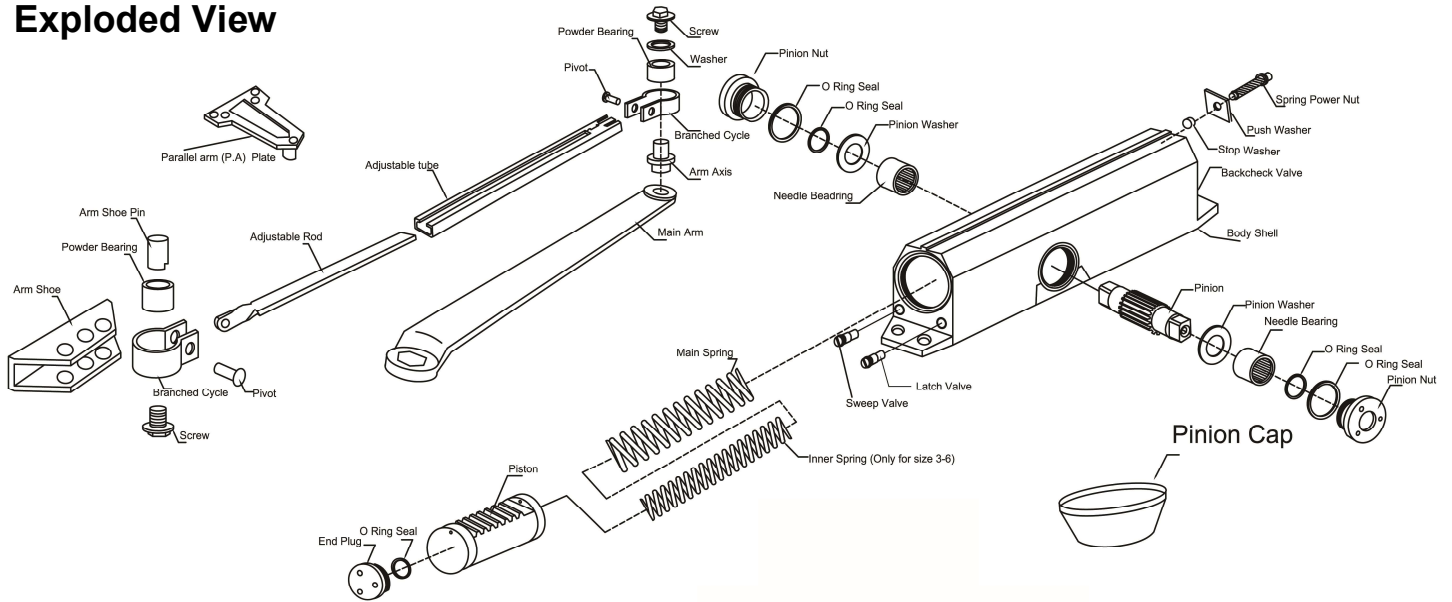
**DALLAS**










**Philadelphia Hardware Group, Inc.**

6590 Top Gun St.  
 San Diego, CA 92121  
 www.philhardware.com  
 Tel: 858-642-0450  
 Fax: 858-642-0454  
 V091423

**Exploded View**



**Accessories**

<p>4001HO Hold Open Arm</p> 	<p>HFW01 Flat Wrench For Hold Open Arm</p> 	<p>PAB02 Parallel Bracket</p> 	<p>1344 Sex Bolts</p> 	<p>40C Full Cover</p> 
<p>40DPPA Drop Plate – Parallel</p> 	<p>40DPTJ Drop Plate – Top Jamb</p> 			

**SAN DIEGO**

**CHICAGO**

**ATLANTA**

**DALLAS**